



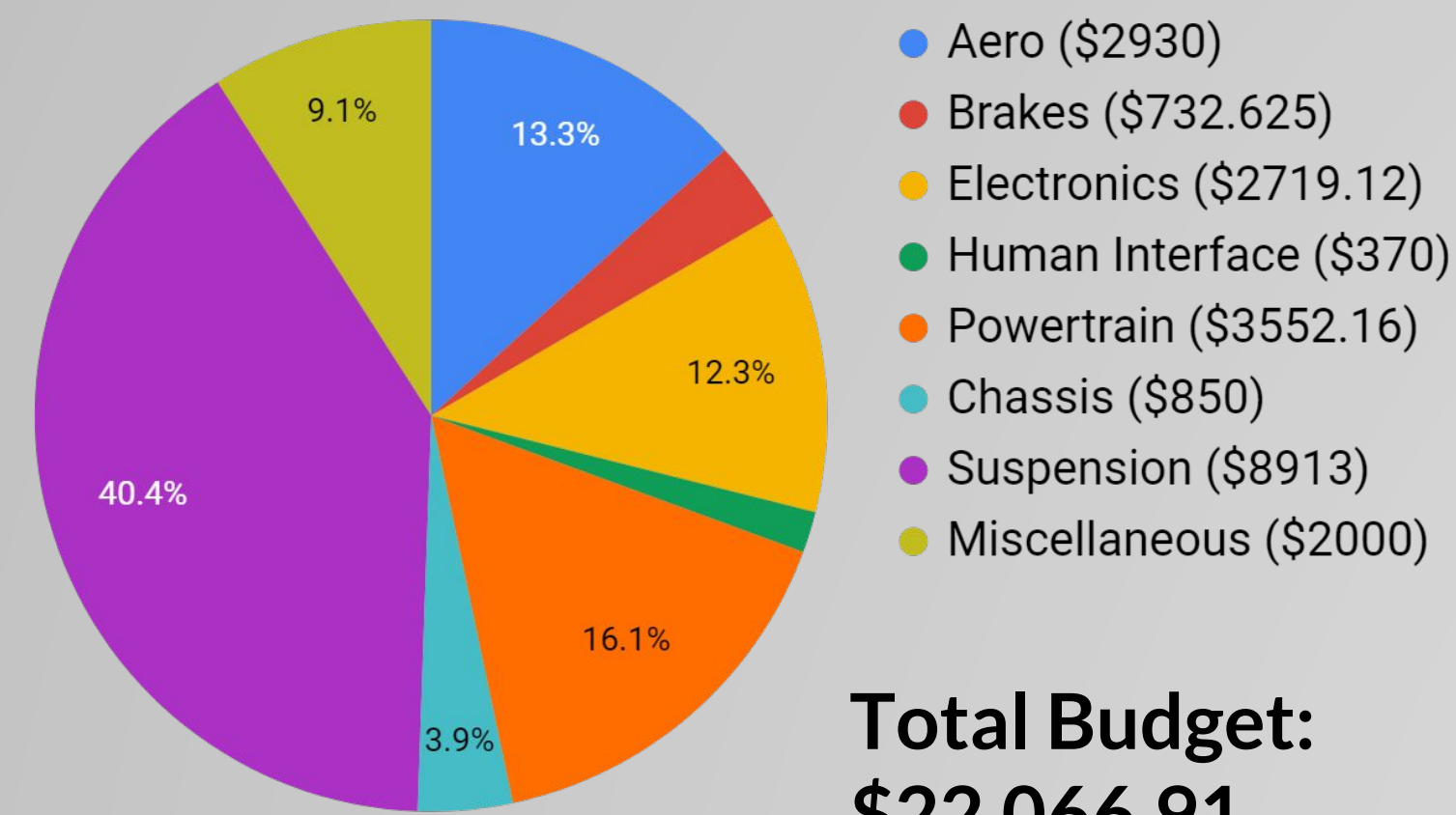
Formula SAE



Wraith

Instagram @anteaterracing

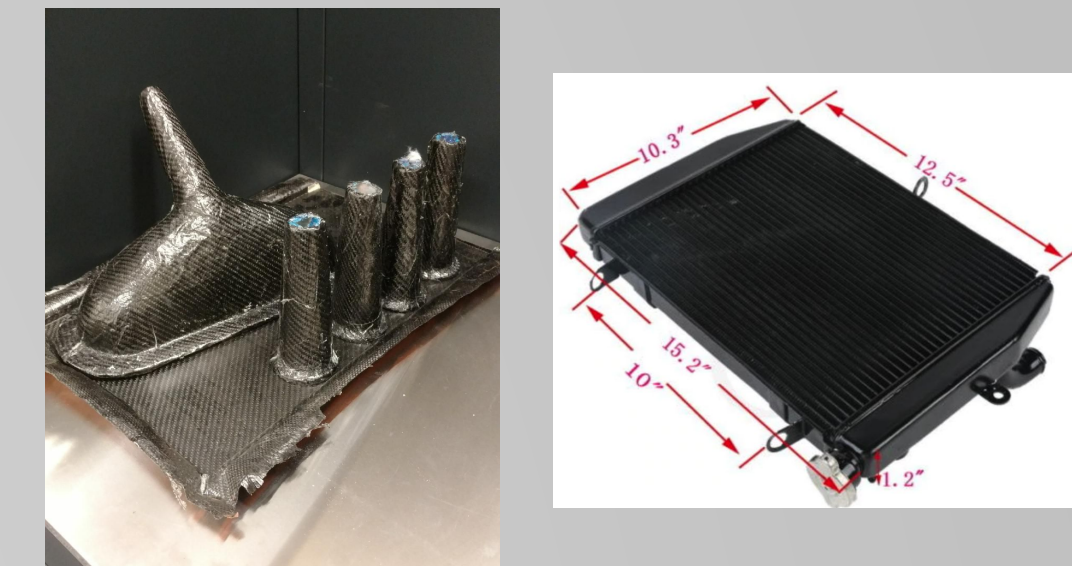
BUDGET



Total Budget:
\$22,066.91

POWERTRAIN

- Improved cooling
- Intake maximizes air flow to each cylinder
- Custom wet sump oiling to lower center of gravity



GOALS

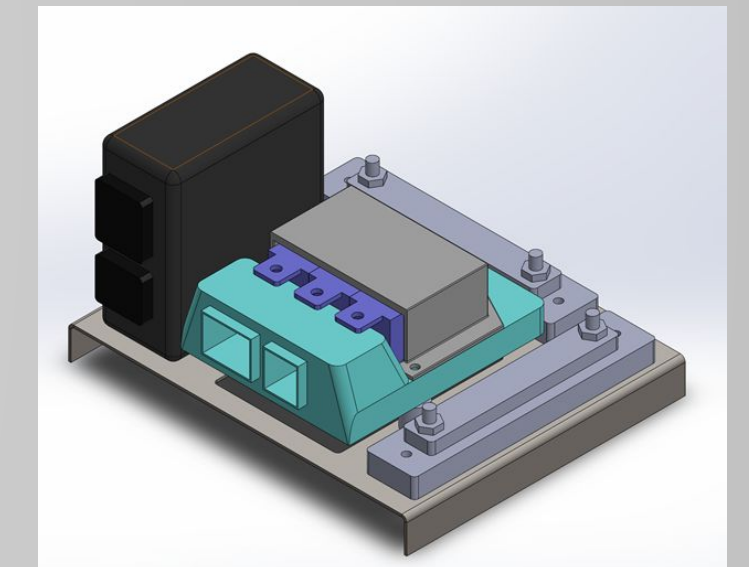
- Top 10 Finish at Lincoln FSAE-IC 2019
- Top 20 Design Presentation

OBJECTIVES

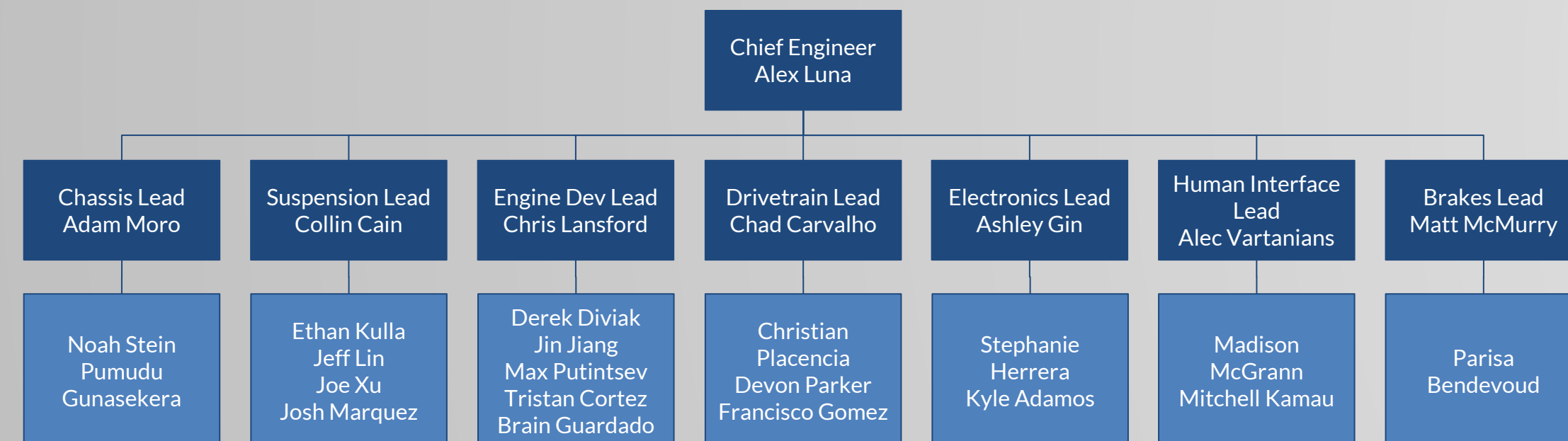
- Weight reduction (480 → 420 lbs)
- Increase Acceleration (4.27 → 3.99s)
- Increase downforce (150 → 300 lbs)

ELECTRONICS

- Modular wiring harness
- Sensors for diagnostics, driver training, research and development

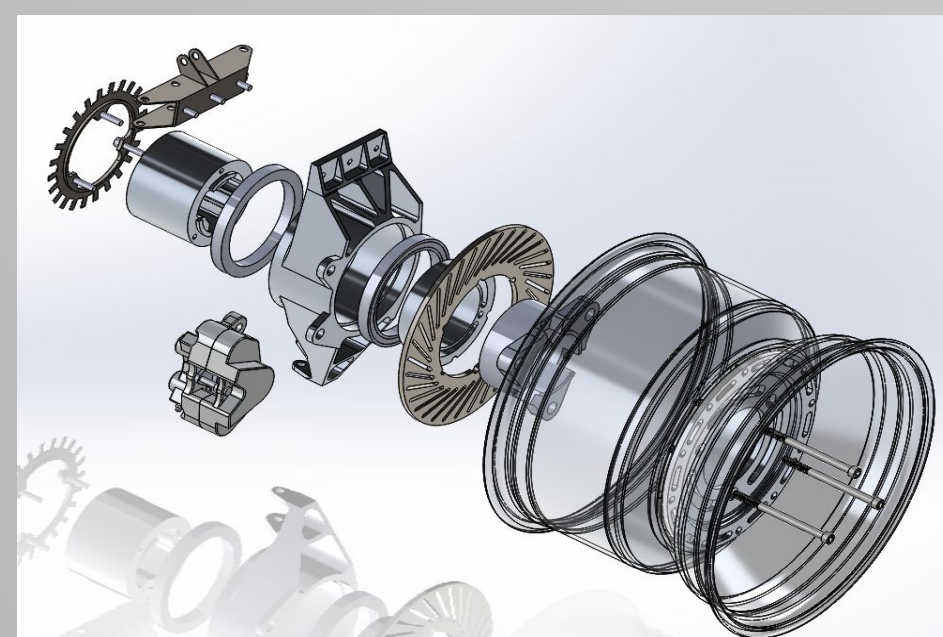


TEAM ORGANIZATION



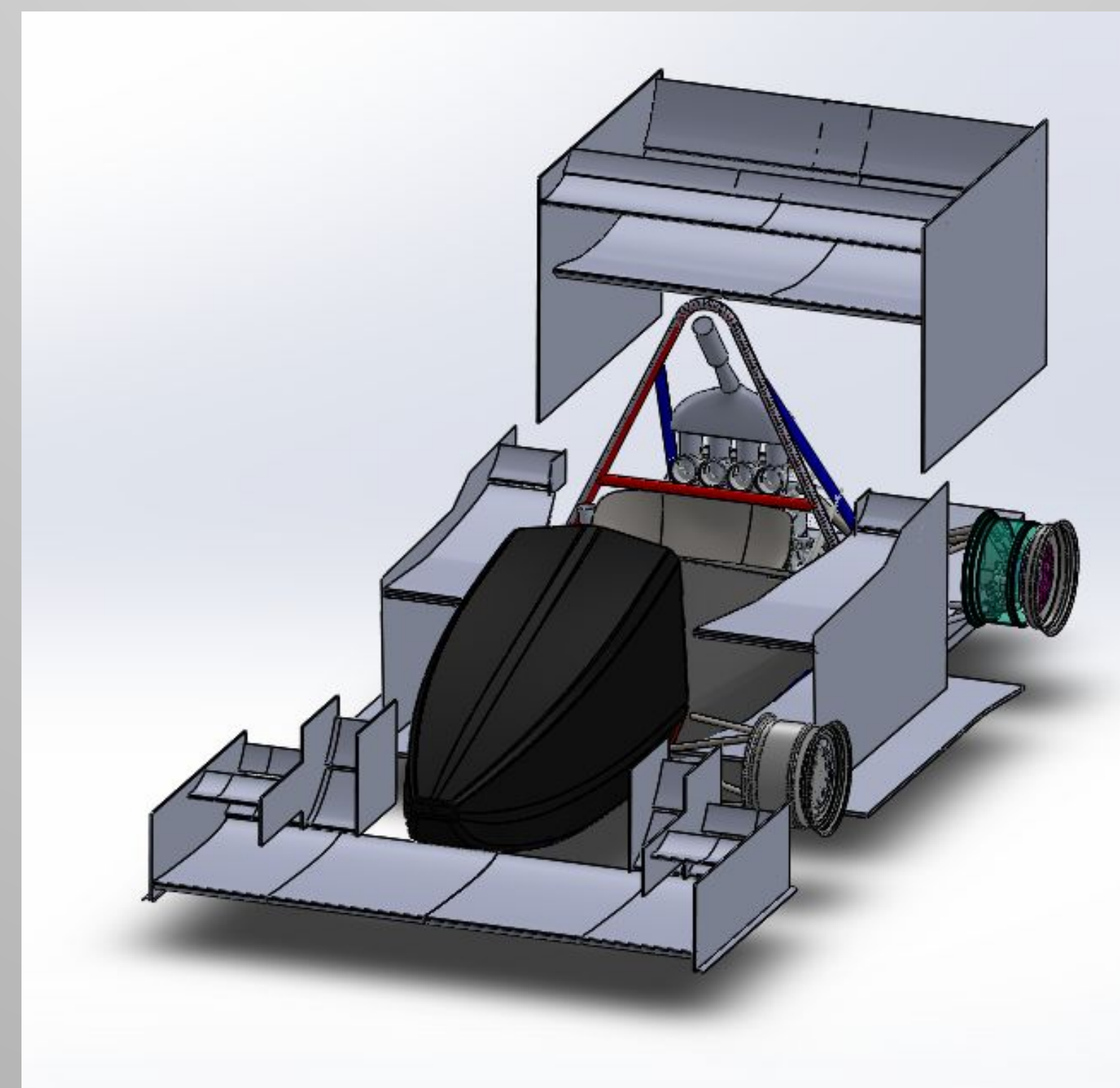
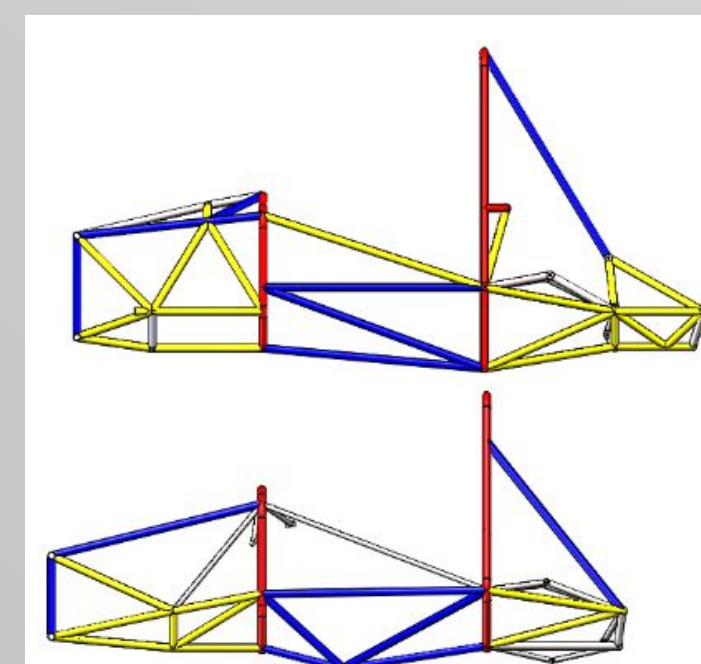
SUSPENSION

- 15% weight reduction
- Removed rear suspension box



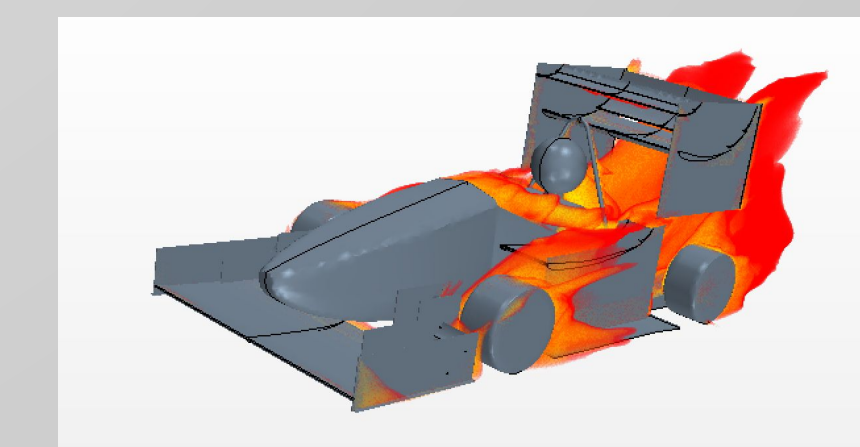
CHASSIS

- 20 lb weight reduction
- 1800 ft*lb/deg torsional rigidity



AERO

- $C_l = 2.5$,
- $C_d = 1.2$
- Front wing being manufactured



ERGONOMICS

- Improve shifting
- Improve driver comfort

